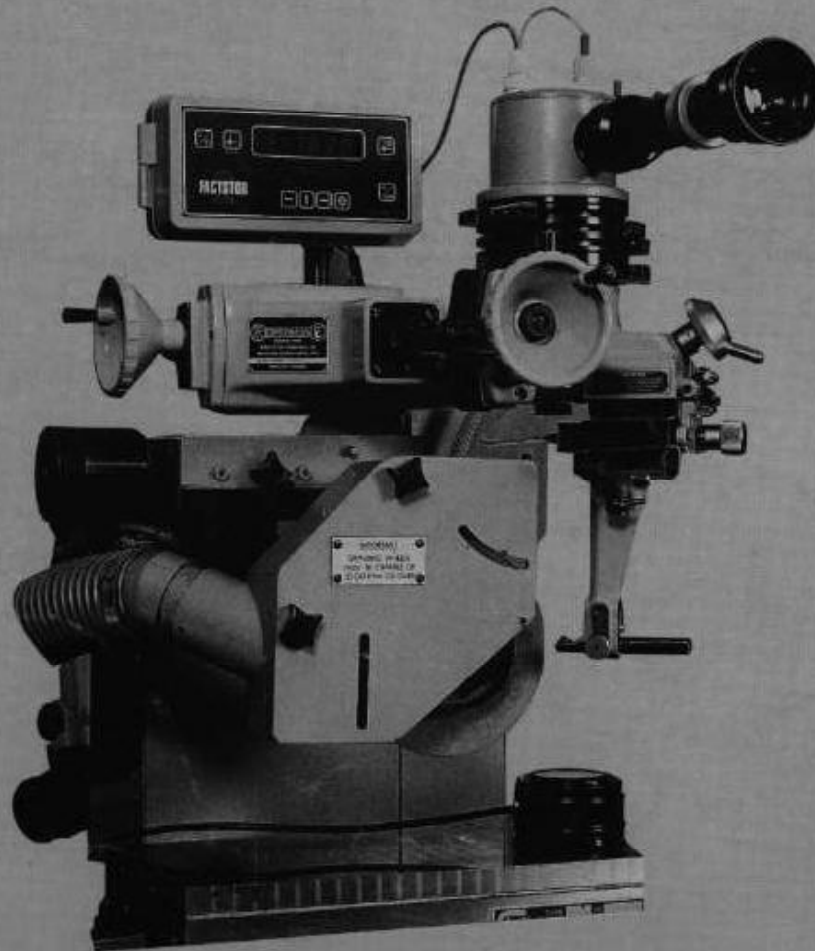


# Optidress E

## Factstor 2



 **COMSAT** RSL  
PG Technology

## Parts List

Mill Green Road  
Mitcham Junction  
Surrey, England CR4 4TX

Telephone 0181 648 9461  
Fax 0181 685 9638

In accordance with our policy of continued improvement, details and specification are liable to change without notice

## Introduction

The keyed illustration of the Optidress E (figure1) indicates the position of each sub-assembly and element referred to in this parts list, together with the corresponding figure number.

Due to the Company's policy of constant improvement, the details as shown in this parts list may be subject to occasional variation. Therefore, it is important when ordering spare and replacement parts, that the following information is given:

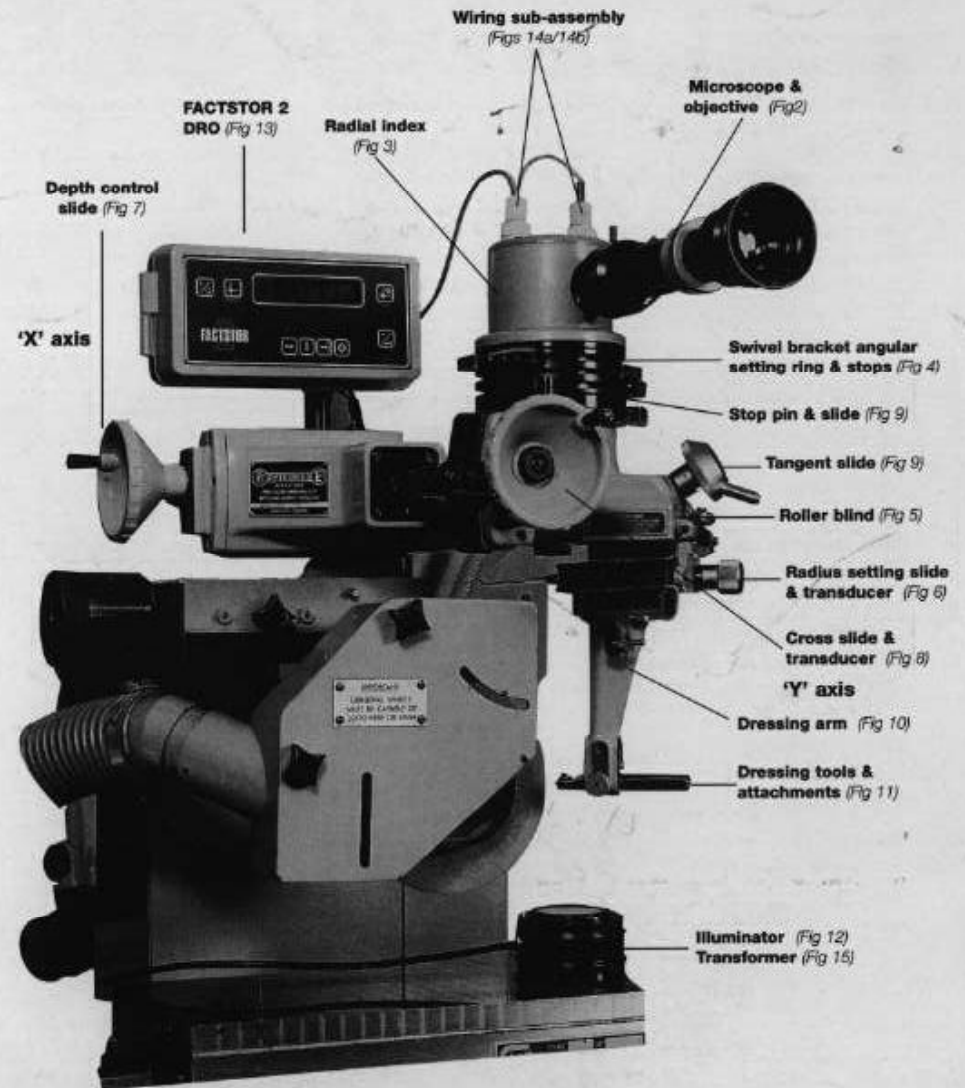
- 1 Optidress E serial number
- 2 Description of part
- 3 Part number .

Separate details of the many types of adaptor brackets to suit individual machines are available upon request.

## Index

	Figure	Page
Optidress E assembled	1	2
Microscopes and objectives	2	3
Radial index	3	3
Swivel bracket, angular setting ring and stops	4	4
Roller blind	5	4
Radius setting slide and transducer	6	5
Depth control slide and transducer	7	5
Cross slide and transducer	8	6
Stop pin and slide	9	6
Dressing arm	10	6
Dressing tools and attachments	11	7
Illuminator	12	8
Factstor digital read out	13	8
Wiring sub-assembly	14a	8
Transformer	15	8

## Optidress E assembled

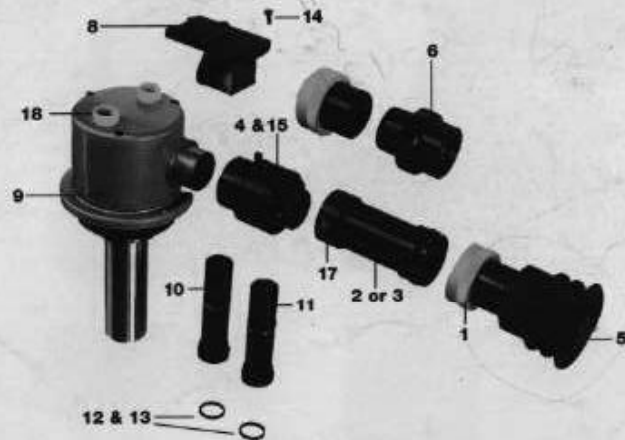


PVC Instrument cover 675-0047C

## Microscopes and Objectives

Figure 2

		Part Number	Qty
*1	Eyepiece complete (Metric or English)	711-SA18E or M	1
2	Optic tube	711-0251	1
3	Optic tube, extended	711-0251E	Not available
4	Reticule offset adj. complete	711-SA119	1
5	Eyepiece shield	711-0048	1
6	Field lens assy with eye shield	711-SA120	1
7	Reticule mount cmpt. (Metric or English)	711-SA121 Eor M	1
8	Prism assembly	711-SA122	1
9	Microscope body	711-0270	1
10	Objective 10x (standard)	711-SA123 Std.	1
11	Objective 10x (extended)	711-SA123 Ext.	1
12	Cover glass	G153	1
13	Cover glass locking ring	663-0123	1
14	Socket cap screw	X13-M4x10	3
15	Taptite disk screw	X98-M4x10	3
16	Countersunk screw	X28-M2x5	1
17	Cone point set screw	X20-M3x5	1
18	Cheese head screw	X26-M4x10 0.04	3
7*	711-SA118E or M consists of: 711-SA120 Field Lens assy. with Shield 711-SA121E Graf and Mount		



## Radial Index

Figure 3

		Part Number	Qty
*1	Microscopic cover sub-assembly	711-SC65 52.79	1
2	PCB complete (not supplied on its own)		1
3	Radial index mount complete	711-SA125	1
+4	Microscope tube & base flange cplt.	711-0207B supply	1
	Base	711-0271B oversize tubes	
5	Radial grating & mount complete	711-SA126	1
6	Retaining collar	711-0208	1
7	Dog (Annulus Mount)	711-0431B	1
8	Drive spring	711-0268	1
9	Pan head screw	X92-M2,5x6	2
10	Cone point set screw	X15-M3x12	3
11	Cheese head screw	X26-M4x50	4
12	Pan head screw	X92-M3x12	3
13	Pan head screw	X92-M1,6x5	2
14	Instrument head screw	X29-M1,6x5	2
15	Coiled pin	X19 Dia. 3 x 14	2

\* See figures 14a and 14b - pages ?? and ??

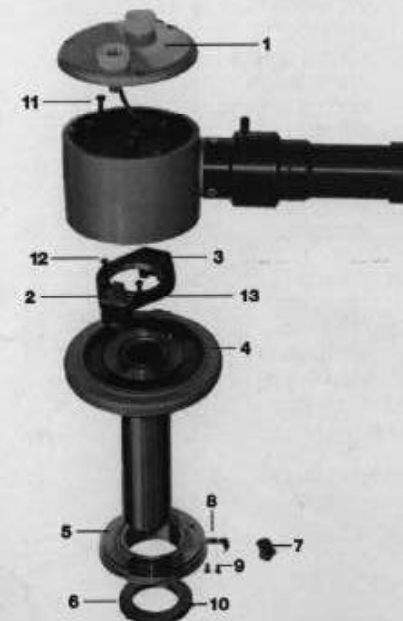
+ Oversize microscope tube and base flange

(711-0207 x 5 + 711-0271B) less item 4  
711-207 x 10 Assy.

(711-0207 x 10 + 711-0271B)  
711-207 x 10 Assy.

7 Microscopic cover sub-assembly with cut-out switch.

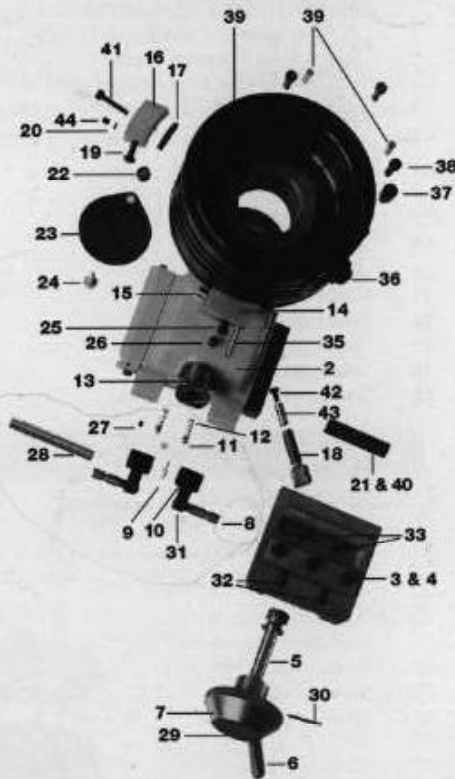
X711-SC65A 52.79



## Swivel Bracket, Angular Setting Ring & Stops

Figure 4

	Part Number	Qty
1	Angular setting ring	1
2	Swivel bracket	1
3	Gib int. slide	1
4	Intermediate slide	1
5	Pinion	1
6	Handle	1
7	Handle base	1
8	Stop adjusting screw	2
9	Spacer	1
10	Stop	2
11	Ball	2
12	Compression spring	2
13	Bearing	1
14	Fixed stop	1
15	Fixed stop anvil	1
16	Adjustable angular stop	6
17	Stop nut	6
18	Angular setting lock screw	1
19	Adjustable stop	6
20	Pad (pressure)	6
21	Rack	1
22	Collar	1
23	Objective cover	1
24	Objective cover screw	1
25	Socket cap screw	1
26	Cone point set screw	1
27	Cup point set screw	1
28	Dowel	1
29	Cup point set screw	1
30	Taper pin	1
31	Socket cap screw	2
32	Cup point set screw	2
33	Cup point set screw	2
34	Socket cap screw	3
35	Dowel	1
36	Instrument head screw for cover and cable support	2
37	Dog (swivel brkt)	1
38	Socket cap screw	3
39	Dowel	2
40	Socket cap screw	2
41	Socket cap screw	6
42	Locking pad	1
43	Locking rod	1
44	Cup point set screw	6
45	Label	1

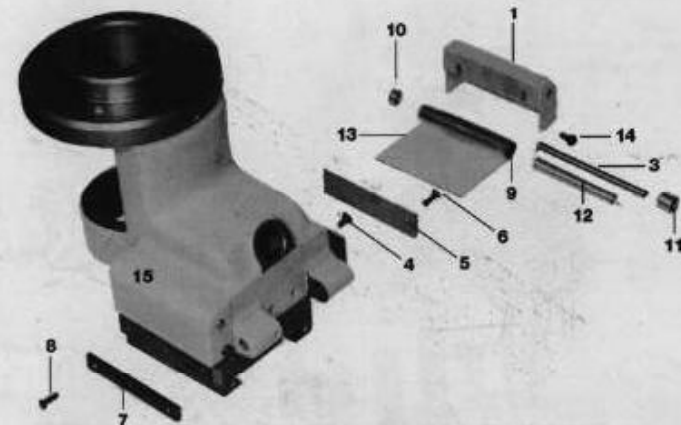


## Roller Blind

Figure 5

	Part Number	Qty
1	Roller blind cover	2
2	Flat point set screw	2
3	Roller pin	2
4	Shoulder pin	4
5	Limit stop	2
6	Countersunk head screw	4
7	Blind retaining plate	2
8	Pan head screw	6
9	Roller	2
10	Roller brush	2
11	Roller shoulder bush	2
12	Roller spring RH (shown)	1
	Roller spring LH	1
Part number for this assembly is Supplied as an assembly only		1
13	Blind *	2
14	Cheese head screw	4
15	Roller blind assembly (LH shown) complete with diecast cover	Pair
Roller & Blind LH & RH		Pair

\* Supplied as  
Assembly only

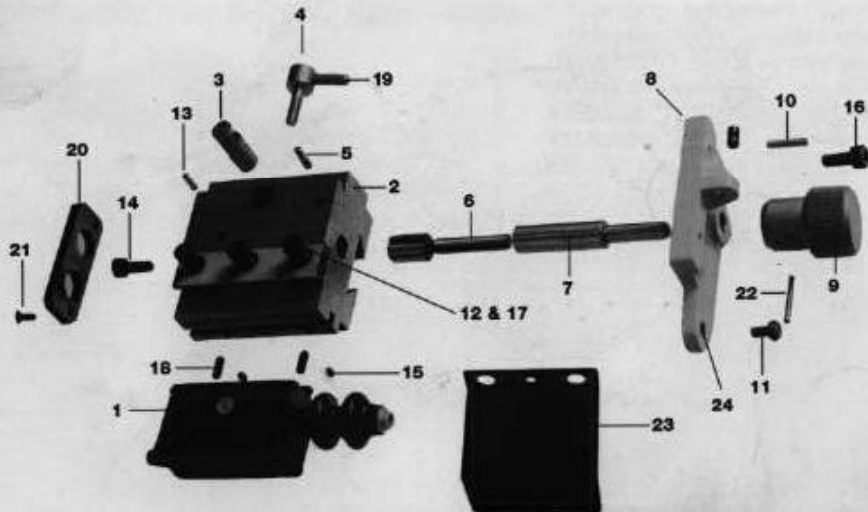


## Radius Setting Slide and Transducer

Figure 6

Part Number	Qty
1 Transducer complete (See fig. 14b for Assy)	1
2 Radius setting slide	711-0010 1
3 Clamp (Rad setting slide)	711-0020 1
4 Clamp screw	711-0021 1
5 Stop pin	X84-Dia .125x .375 1
6 Feed screw (Rad setting slide)	711-0226 1
7 Feed nut	711-0227 Assy. 1
8 Feed screw and push-rod support (711-100-93A)	711-0221B Assy. 1
9 Feed screw knob	711-0228A+228B 1
10 Pin	X38-Dia 3x16 2
11 Pan head screw	X94-M4x8 1
12 Gib	663-0034A 1
13 Dowel	X37-Dia .125x.375 1
14 Socket cap screw	X13-M5x12 1
15 Cone point set screw	X15-M3x5 2
16 Socket cap screw	X13-M4x10 2
17 Socket cap screw	X13-2BAx3/8 3
18 Cup point set screw	X16-4BAx3/8 2
19 Handle	663-0041B 1
20 Stop plate	711-0022 1
21 Countersunk screw	X28-M3x8 2
22 Coil pin	X19 Dia.2x18 1
23 Transducer cover	711-0427 1
24 Rod locator dog	711-0097 1
25 Shim	663-0078A 1

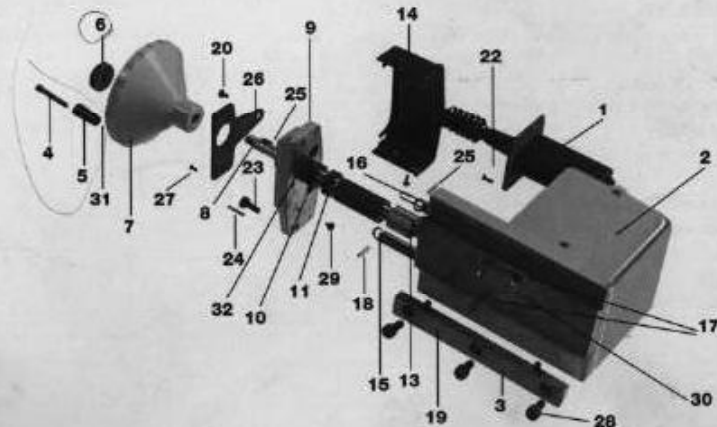
\*12 Gib/663-0034A は 691-0015 の 角度が違ふ。



## Depth Control Slide and Transducer

Figure 7

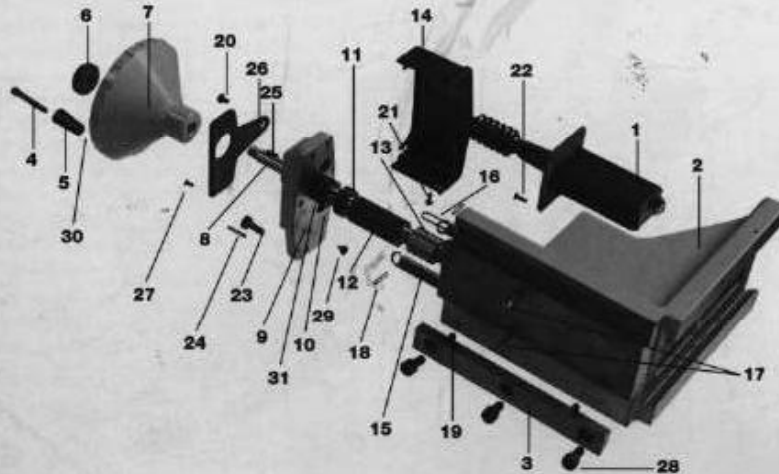
Part Number	Qty
1 Transducer complete was - SA54	711-SA108 1
2 Column	711-0001 1
3 Gib	711-0042 1
4 Handle screw	663-0515 1
5 Handle	663-0516 1
6 Nut (Feed)	711-0015 X31-M8x1 1
7 Feed handle	711-0011 1
8 Feed screw	711-0203 1
9 Feed screw end plate	711-0202A 1
10 Lock nut	663-0014 2
11 Sleeve nut	711-0013 1
12 Sleeve	711-0014 1
13 Feed nut (Handle)	711-0016 1
14 Dust cover	711-0017 1
15 Spring (Extension)	663-0045 2
16 Stop wire loop	711-0231 1
17 Spring pin	663-0039 2
18 Dowel	X38-Dia 3x14 2
19 Cup point set screw	X16-M5x10 2
20 Pan head screw	X92-M4x6 1
21 Pan head screw	X92-M3x8 2
22 Instrument head screw	X29-M3.5x10 4
23 Socket cap screw	X13-M5x12 3
24 Pin	X38-Dia 3x16 2
25 Woodruff key	X40WD-1/8x3/8 1
26 Push-rod end plate	X711-0201A 1
27 Instrument head screw	X29-M3x8 3
28 Socket cap screw	X13-M6x12 3
29 Shoulder screw	711-0201A 2
30 Cheese head screw	X26-M6x8 1
31 Nut	X32-M5 1
32 Coated washer	711-0573 1



## Cross Slide and Transducer

Figure 8

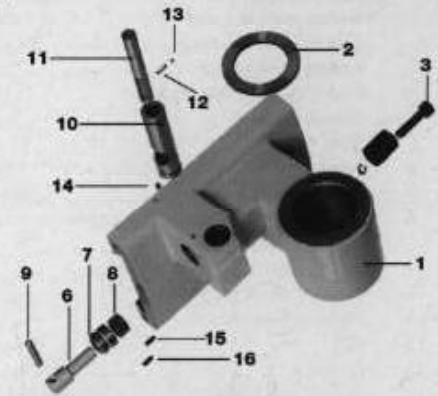
	Part Number	Qty
1	Transducer complete w/as - SA54	1
2	Slide bracket	1
3	Gib	1
4	Handle screw	1
5	Handle	1
6	Nut (Feed)	1
7	Feed handle	1
8	Feed screw	1
9	Feed screw end plate	1
10	Lock nut	2
11	Sleeve nut	1
12	Sleeve	1
13	Feed nut (Handle)	1
14	Dust cover	1
15	Spring (Extension)	2
16	Stop wire loop	1
17	Spring pin	2
18	Dowel	X38-Dia 3x14
19	Cup point set screw	X16-M5x10
20	Pan head screw	X92-M4x6
21	Pan head screw	X92-M3x8
22	Instrument head screw	X29-M3.5x10
23	Socket cap screw	X13-M5x12
24	Pin	X38-Dia 3x16
25	Woodruff key	X40WD-1/8x3/8
26	Push-rod end plate	X711-0201A
27	Instrument head screw	X29-M3x8
28	Socket cap screw	X13-M6x12
29	Shoulder screw	Z11-0094
30	Nut	X32 M5
31	Coated washer	711-0573



## Stop Pin and Slide

Figure 9

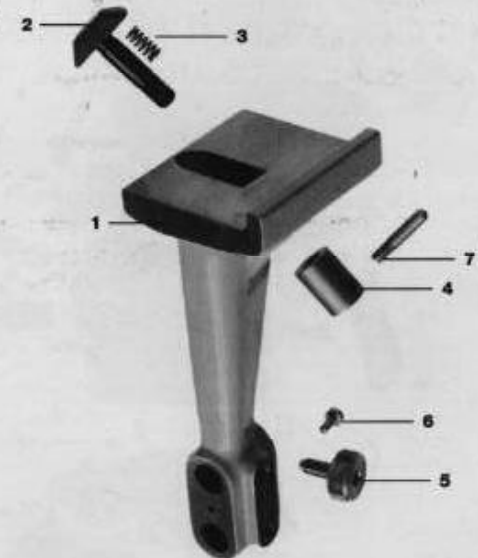
	Part Number	Qty
1	Front slide	711-0003
2	Spacing washer	711-0043
3	Microscope clamp screw	X13-M6x25
4	Microscope clamp	711-0028C
5	Hex lock nut m6	X32-M6
6	Pinion shaft	711-0023
7	Pinion shaft bush	711-0024
8	Pinion	711-0025
9	Handle	663-0041B
10	Stop pin sleeve	711-0027
11	Stop pin rack	711-0026
12	Spring	711-0044
13	Steel ball	X86-Dia 3
14	Cone point set screw	X15-M3x5
15	Cup point set screw	X16-M3x8
16	Cone point set screw	X15-M3x8



## Dressing Arm

Figure 10

	Part No.	Qty
1	Dressing arm (Metric)	711-0006M
	(English)	711-0006E
2	Clamp (for dressing arm)	711-0005
3	Clamp spring	711-0041
4	Clamp nut	711-0018
5	Dressing tool clamp screw	711-0054
6	Anvil	663-0044
7	Handle	663-0041B
8	Dressing arm assy.	711-SA109M
9	English or Metric	711-SA109E

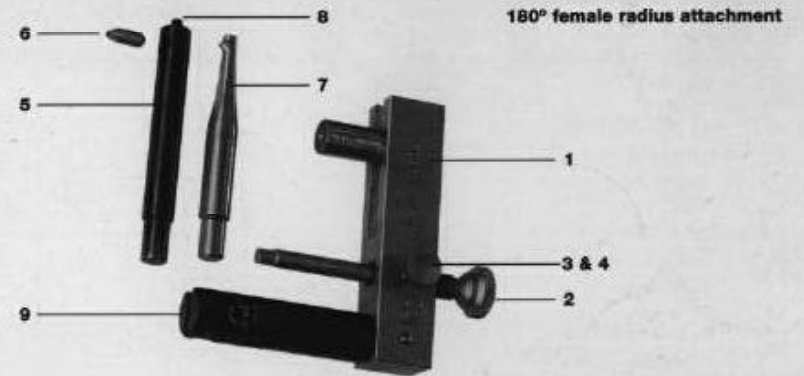
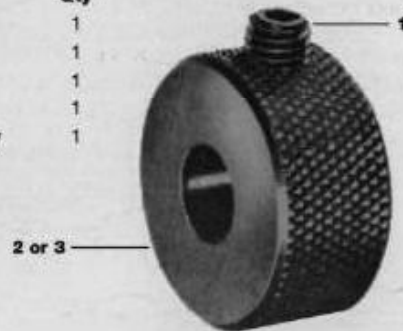


**Poly-Tip and holder**

	ØA	Stock No
Holder complete (less tip)	12mm	711-0056-EM-ASSY
	4375in	711-0056-EE-ASSY
Poly-tip (blister pack of 3)		711-0057 - Pkt
Clamp		711-0055
Socket screw		X13 - M2, 5x8
Hex wrench		Y15 - 2mm - A/F

**Dressing Tool Setting Ring**

	Part Number	Qty
1	Cup point set screw X16-M6x8	1
2	Setting ring (Metric bore) 711-0035M	1
3	Setting ring (English bore) 711-0035	1
4	Assembly (English) 711-0035 Assy	1
5	Assembly (Metric) 711-0035M Assy	1



	Part Number	Qty	
1	Body Spigot 711-0039 711-0040	Together	
	Body and spigot assembly (Metric)	711-AT01M	1
	(English)	711-AT01E	1
2	Screw steady and insert complete	691-0048A & 663-0409	1
3	Bias screw	663-0410	1
4	Bias screw pad	663-0411	1
5	Dressing tool post	663-0270	1
6	Chisel point diamond	663-0271	1
7	Rat-tail diamonds	663-0256B 663-0256C 663-0256D	1 1 1
8	Cup point screw	X16-4BAx3/16	1
9	Socket head cap screw	X13-2BAx1/2	1

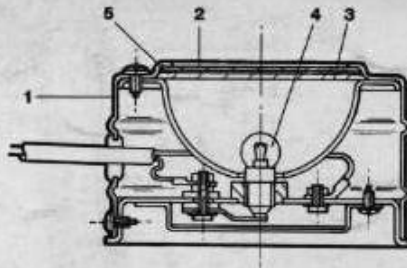
Rat Tail Diamonds	R	
	0.87mm 0.034in	663-0256B
	1.98mm 0.078in	663-0256C
	2.95mm 0.117in	663-0256D
	6.35mm 0.25in	663-0271

Chisel point diamonds  
Shown mounted in diamond post

## Illuminator

Figure 12

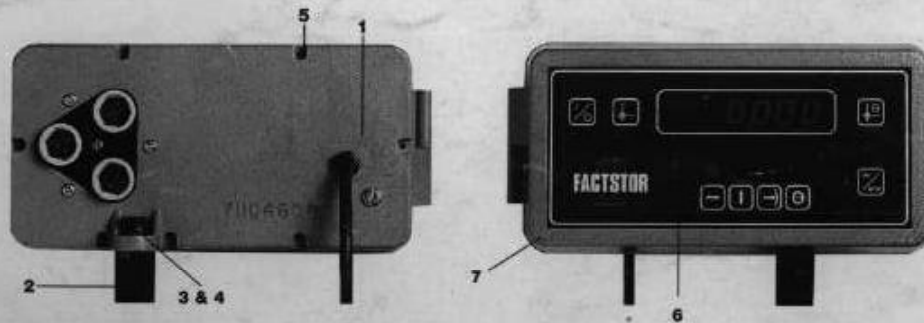
	Part Number	Qty	
1	Illuminator complete	711-SA128CHEM	1
2	Ground glass	G113	2
3	Filter glass	G114	1
4	Bulb 6V3W MES 11mm	663-L10	1
5	Paper gasket	663-L09	1



## Factstor 2 Digital Read-out

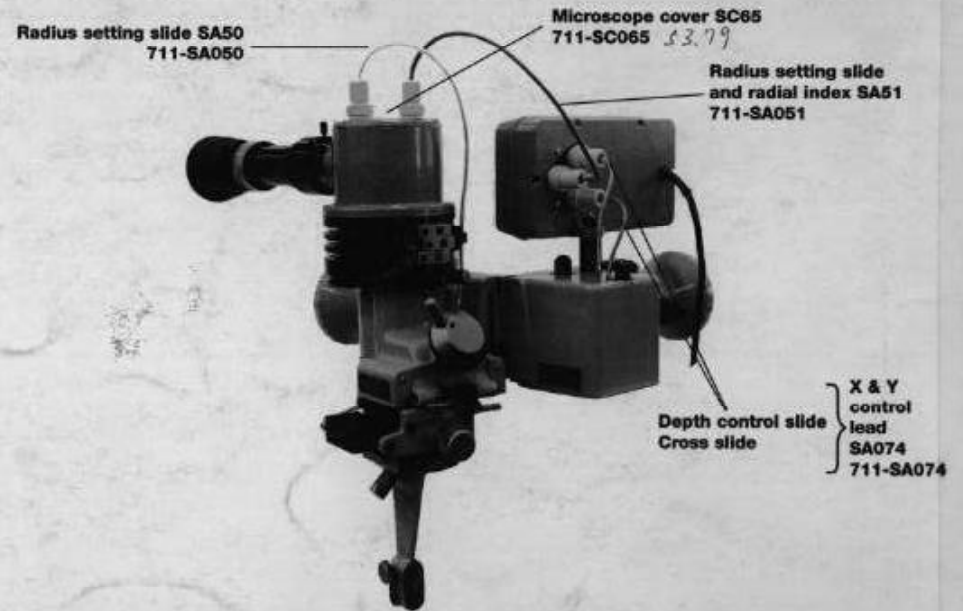
Figure 13

	Part Number	Qty	
1	DRO unit complete (2 micron unit)	711-SA135	1
2	Space pillar (32 mm LG)	711-0296	1
3	Socket cap screw	X13-M8x50	1
4	Washer	X34-Dia .312	1
5	Cap head screw	X13-M3x25	7
6	Touch sensitive panel (membrane switch)	711-0580	1
7	DRO case front	711-0578	1
8	Factstor 2 PCB	711-SA136 338.61	1
9	Ribbon lead assembly	711-SA133	1
10	Bracket to extend DRO	711-0454	1



## Wiring Sub-assembly

Figure 14



## Transformer

Figure 15

	Part Number	Qty	
1	Transformer 110V or Transformer 240V or Transformer 240V Switch	711-SA130V110 711-SA130V240 711-SA130V240A	1 1 1
2	Illuminator connector	663-L13	1
3	DRO connector (Twist lock midget cap)	711-0422	1

